

# RTX™ 1500

The solution for the interior applications of decorative materials



## PROFESSIONAL ADVANTAGES

- Sprays most interior decorative finishes
- Easy to use and maintain
- Compact and ready to spray

## MATERIALS

Powder - Premixed materials - Silicate, fibers, granite, marble, stones present in decorative materials



# RTX™ 1500

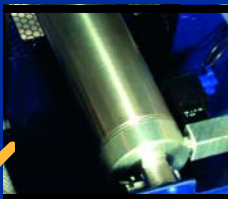
The solution for interior applications of decorative materials



**RotoFlex™ HD Pump**  
Ability to pass large aggregates without damaging them or the pump.



**Dual-shaft Electric Motor**  
Unique. One motor that operates both the pump and the air compressor.



**Automatic Unloader Cylinder**  
Eliminates the material blast that impacts finish quality. Better comfort with resulting soft start at each trigger pull.



**Ready to spray**  
On board compressor

### High Production Rate

Large, easy to fill hopper  
Steep-sided wall to keep materials flowing to the pump  
Easier, lighter than a pressure pot system



### Quick to clean

Hopper is removable from cart without tools



### Fast set-up

"thread-on" connections  
No tools needed  
One man operation

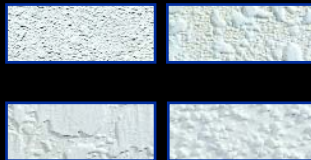


### Easy to transport

Rugged cart with handles  
Extra large wheels  
Compact and balanced

### Simple to operate

Simple controls  
Air and material can be tuned-in at the gun



## ACCESSORIES

### Gun

248091 TexSpray™ gun (non-bleeder)

### RTX Fluid Nozzles

(round pattern)  
15C883 3 mm  
15C884 4 mm  
15C885 6 mm  
15C886 8 mm  
15C887 10 mm  
15C888 12 mm

### Fine Finish Kit

Produces a fan and finer finishes than just using a fluid nozzle!  
Cover your surface faster with a finer finish!

287227 Kit includes: 1 adapter that mounts on gun end, on top of fluid nozzle + 4 FF disks (3, 6, 8 and 9.5 mm)

\* Hint: use as small a disk as particle sizes allow. The smaller the disk, the wider the fan and the finer the finish is. Always use in addition to the fluid nozzle.

### Clear Braided Hose Kits

with threaded RTX connections and 3/8" air hose  
287304 1" x 7.5 m  
287305 1" x 15 m  
287306 1 1/4" x 7.5 m  
287307 1 1/4" x 15 m

### Sponge Balls Kit

248515 1" (x5)

### RotoFlex™ Pump Hose Kit

287314

### Connection Kit

for additional external compressor  
287328

\* To be used when extra air is needed for extra coarse materials

## RTX™ 1500

### SPECIFICATIONS

#### Part Numbers:

220 V (Europe Version)	<b>248370</b>
220 V (Italy, Switzerland, Denmark)	<b>248315</b>
Max. Fluid Working Pressure	7 bar
Max. Air Working Pressure	3 bar
Max. Fluid Delivery	7.6 l/min
Motor	1.5 kW (2 HP)
Weight complete	66 Kg
Max. Hose Length	15 m
Max. particle size through RotoFlex	9 mm
Max. particle size through gun	4.5 mm
Hopper Capacity	57 l
Compressor Specifications	oilless compressor - 185 l/min. @ 3 bar

The RTX 1500 is shipped complete with the RTX Texture Spray Gun, 6 nozzles, 2 HP Air Compressor, Clear Braided Material Hose (1" x 7.5 m) & Air Hose (3/8" x 7.5 m).