



EUROBLAST



	UNBLASTED	SA 1	SA 2	SA 2.5	SA 3
RUST GRADE A		<p>This condition cannot normally be attained when removing adherent mill scale</p>			
RUST GRADE B					
RUST GRADE C					
RUST GRADE D					

STEEL SURFACE FINISH STANDARDS

THE SOLUTIONS FOR SURFACE FINISHING INDUSTRY

THE COMPANY

Euroblast Middle East LLC has charted an impressive trajectory, evolving into a prominent supplier of abrasives, blasting and coating equipment. Our commitment to excellence is underscored by our remarkable achievement of winning the One Million Dollar Graco Distributor Award for eleven consecutive years, a testament to our unwavering dedication to quality and customer satisfaction.

With a team of seasoned professionals boasting over two decades of experience, Euroblast guarantees tailored advice that meets your specific needs. Our expertise extends beyond traditional boundaries as we have successfully diversified into related areas, achieving significant success in each venture.

Our product portfolio includes a wide range of abrasives such as Garnet, Coal Slag, Steel Grit, Aluminium Oxide, Glass Beads, and Plastic Media.

Euroblast offers a comprehensive array of surface preparation equipment, ranging from conventional Blasting Pots to Double Chamber Pots, Bulk Blasters, Slurry Blasters, and water jetting systems. For applications where these systems are less suitable, we provide Vacuum and Wheel Blasting Systems.

In addition to grit blasting, Euroblast excels in Water Jetting systems rated up to 3,000 bar, offering both hand-held and vacuum blasting options. Our engineering department, with extensive experience, specializes in designing and erecting Blast Rooms, Paint Booths and Air Handling systems.

Our Research and Development division showcases innovation, with the capability to design, prototype, and produce unique systems if not readily available in the market. We cater to different coating systems, like single and plural components and offer various solutions to spraying, dispensing, measuring and transferring liquids, chemicals, and other fluids.

Euroblast's influence extends to various industries, leading to the expansion of our company activities. As a leading Lump Sum Turnkey (LSTK) contractor, Euroblast Middle East LLC goes beyond being a supplier to providing end-to-end solutions. Our expertise in LSTK contracts encompasses seamless project management, from conceptualization to completion. With a proven track record, we undertake the responsibility of delivering turnkey solutions for abrasive blasting and painting projects. Our integrated approach ensures efficient coordination of resources, adherence to timelines, and adherence to the highest industry standards. By choosing Euroblast as your LSTK contractor, you benefit from our comprehensive capabilities, industry knowledge, and commitment to delivering successful, hassle-free projects tailored to your unique requirements.

At Euroblast, we pride ourselves on our commitment to delivering superior products, unmatched expertise, and innovative solutions that cater to the diverse needs of our clients across industries.

Some of our Accredited Suppliers are:

Principals	Products
Euroblast- Turkey	Blasting Equipment & Accessories.
SPE International Ltd- UK	Horizontal & Vertical Autoblaster Machines
PRD- USA	Pipe cleaning and coating equipment
Pangborn SES- UK	Wheel Blast Machines and Blastrooms
Disab-Tella-Sweden	Vacuum Recovery & Recycling Equipment.
Densin- Singapore	High & Ultra High Pressure Technology.
Graco- USA	Painting Equipment & Accessories.
Uniquelcoat - USA	Metal Arc Spray
Elcometer - UK	Testing Equipment.
TQC- Holland	Testing & Measuring Equipment.
RPB - USA/ New Zealand	Safety Respiratory Equipment
Mitsubishi Material Corporation – Japan	Copper Slag.
Eurogrit B.V – Holland	Coal Slag, Filter Sand Media.
Australian Garnet	Garnet
Winoa – France	Steel Grit and Steel shots
Resato – Holland	High Pressure testing and Control Equipment
Dalgakiran- Turkey	Compressors



EUROBLAST

**CONVENTIONAL TYPE
BLASTING EQUIPMENT &
ACCESSORIES**

**HIGH PRESSURE WATER
JETTING PUMPS**

WHEEL BLAST MACHINES

BLAST ROOM

PAINT BOOTH

DUST COLLECTOR

**VACUUM RECOVERY
EQUIPMENT**

**DUST FREE
BLAST MACHINE**

**PIPE CLEANING & COATING
EQUIPMENT**

**AIRLESS SPRAY
PAINTING EQUIPMENT**

**PLURAL COMPONENT
PAINTING SYSTEM**

**ARC SPRAY
COATING SYSTEMS**

**SURFACE TESTING
EQUIPMENT**



EUROBLAST

COPPER SLAG

COAL SLAG

GARNET

**ALUMINIUM
OXIDE**

GLASS BEADS

**STEEL SHOT
& GRIT**

Removal of Mill scale, rust, paint and the creation of an even, keyed surface to accept paint and other coatings is an established and vital first process in the surface preparation & coating industry. In order to carry out the work effectively, Euroblast supplies various types of equipment depending on specific needs.

PRESSURE BLAST MACHINE - SINGLE CHAMBER & DOUBLE CHAMBER

Conventional types of Blast Machines are used to blast clean mill scale, pitting and corrosion on steel surfaces, removing laitance from concrete, underwater blast cleaning, expose re-bar from concrete etc. Single chamber blast machines come with single control valve and is operated by one person. Double chamber blast machine is used for bigger jobs and continuous operation. The machine comes with two or more control valves.



Model	Capacity (Litres)	Maximum Working Pressure (Bar)	Shell Thickness (mm)	Cone Thickness (mm)
EBSC40	40	7 - 8	4.0	4
EBSC60	60	10 - 12	3.6	4
EBSC100	100	10 - 12	3.6	4
EBSC200	200	10 - 12	4.1	5
EBSC300	300	10 - 12	4.1	5
EBDC300	320	10 - 12	4.1	5

All machines are manufactured by reputed manufacturers having ISO certification and are TUV certified.

Recommended abrasives are Coal Slag, Copper Slag, Garnet, Steel Shot and Steel Grit. Machines are fitted with Flat Sand valve / Thomson valve / Dosing valve or Steel grit valve depending on the abrasive used. Machines are supplied with either Pneumatic or Electro-pneumatic 12/24 V dead-man control valves for remote control operation. For advanced safety operation in petrochemical and shipyard industry, Euroblast recommend Elector-pneumatic remote control valve. For durability and high productivity, Micro valve is recommended for garnet blasting media and steel grit valve for steel grit blasting media.



BULKBLAST MACHINE

Bulk Blast machines are designed to maximise cost savings out of volume production. The shipyards and other industries wherein multiple blasting nozzles are envisaged for higher productivity use stationary and mobile bulk blast machines.

The multi-outlet control systems (usually 4-6 outlet) allow each operator independent control of abrasive media flow.

Model	Capacity	Load Unit
EBBB 190	190 CU FT (5400 Ltr.)	8000 kg
EBBB 140	140 CU FT (4000 Ltr)	6000 kg

All machines are manufactured by reputed manufacturers having ISO certification and are TUV (German) certified.

Recommended abrasives are Coal Slag, Copper Slag, Garnet and Steel Grit. Machines are equipped with electro-pneumatic remote control systems for safer operations.

This equipment is the safest, most durable, dependable and highly productive. Euroblast can custom-design system to meet your specific need.



Efficiency and economy substantially depended on the quality and the type of the accessories used. Blasting process can be very dangerous if quality products are not used. Euroblast supplies quality products sourced from various reputed manufacturers world-wide and can assist in proper selection of the accessories for efficient and economic operations.

ACCESSORIES & PROTECTIVE SYSTEM

Accessories

- Remote Control
- Blast Nozzles
- Blast Hose
- Hose Coupling
- Nozzle Holders
- Ducting Hose
- Air Hose
- Sand Blast Hose

Valves

- Thomson valve
- Sand valve
- Micro valve
- Dosing valve
- Combo valve

Protective System

- Panorama Helmet
- Protecta Helmet
- Bullard Helmet
- Airfilter
- Filter Cartridge
- Air Conditioning



SPE International Ltd is based in the UK and are specialist manufacturers of horizontal and vertical Autoblaster machines. The principle of the equipment is the use of a centrifugal blast wheel. The surface to be prepared is impacted and abraded by steel abrasive being propelled at high velocity. The abrasive is immediately reclaimed along with the debris being removed. The abrasive is cleaned and contained for immediate re-use and the debris deposited in a dust collection unit. The standard of cleaning and profile required can be varied. The machines are available in electric and hydraulic design..

HORIZONTAL AUTOBLAST

The SPE series of Horizontal Autoblaster machines are mainly used for the preparation of steel and concrete surfaces. The machines can be dismantled to pass through a 600mm wide access hole in storage tanks in the petrochemical industry.

Technical specifications

	SPE 9E	SPE 12E	SPE 16E	SPE 20E
Type	Electric	Electric	Electric	Electric
Power Output (HP)	3-5.5	10	15	30
Cleaning width (mm)	230	305	406	520
Dust collection	Optional	Optional	Optional	Optional

Typical application includes the removal of mill scale and coatings on offshore platforms, helidecks, ships decks, steel plates etc. and in the petrochemical industry. Concrete preparation including laitance removal and the cleaning and removal of coatings.



VERTICAL AUTOBLAST



SPE has designed and patented a range of vertical Autoblaster machines.

Type I: Used to blast clean vertical surfaces of storage tanks and ships hulls moving from left to right or right to left. A suitable painting system can be simultaneously attached and a camera system can be included for inspection of the blasted / coated surface.

Technical specifications

	VI-9	VI-12	VI-16	VI-20
Type	Electric	Electric	Electric	Electric
Power Output (HP)	5.5	10	15	30
Cleaning width (mm)	230	305	406	520

Type II: The head of the vertical machines type I (with a suitable carriage) can be used to blast clean the internal shell up to 2 meter height. This is the only machine available in the market offering this type of operation.

Technical specifications

	VII-9	VII-12	VII-16	VII-20
Type	Electric	Electric	Electric	Electric
Power Output (HP)	5.5	10	15	30
Cleaning width (mm)	230	305	406	520

Typical application includes the removal of mill scale, corrosion and existing coatings on ships hulls and internal and external storage tanks.

The SPE vertical range of Autoblaster machines vary from other machines of a similar type as they have a different reclaim system with less moving parts.



SPE's product range includes Autoblaster machines, the BEF range of planers, Diamond Floor Grinders, Mixing products, Handtools, Vacuums and Multistripper range. SPE is one of the market leaders in the manufacture of concrete and steel surface preparation equipment.

HIGH & ULTRA HIGH PRESSURE DIESEL & ELECTRICAL POWERED WATER BLASTING UNITS

Features

- Non corrosive materials are used in the pump, fittings and pipes.
- Large high flow stainless steel water filter suitable for shipyard water supply, with the benefit of reduced cavitation through even liner water flow.
- Triplex pump with tungsten carbide plungers.
- Floating plunger system with water cooling and lubrication.
- In-line valves.
- Built-in reduction gearbox.
- Extremely service friendly pump design.
- Seamless 316 stainless steel water tank, 250 liters, rubber mounted.
- Low water level and low supply pressure cut-off system.
- Four leg isolators, full frame protection.
- Lifting eyes & forklift slots.
- Back flush primary inlet water filter system.
- Galvanized and powder coated box section steel frame.



Technical Data		C-650/80D	C-800/63D	C-1000/48D	C-1000/63D	C-1400/38D	C-2070/26D	C-2500/25D
Pressure	bar/psi	650/9425	800/11600	1000/14500	1000/14500	1400/20000	2070/30000	2500/36000
Flow	L/min/ USGpm	80/21.1	63/16.7	48/12.7	63/16.7	38/10.0	26.0/6.8	25.0/6.6
Power consumption	Kw/Hp	112/150	112/150	112/150	112/150	112/150	112/150	112/150
Engine		Deutz 6 Cyl. Turbo Charged w.Intercooler Air Cooled Diesel	Deutz 6 Cyl. Turbo Charged w.Intercooler Air Cooled Diesel	Deutz 6 Cyl. Turbo Charged w.Intercooler Air Cooled Diesel	Deutz 6 Cyl. Turbo Charged w.Intercooler Air Cooled Diesel	Deutz 6 Cyl. Turbo Charged w.Intercooler Air Cooled Diesel	Deutz 6 Cyl. Turbo Charged w.Intercooler Air Cooled Diesel	Deutz 6 Cyl. Turbo Charged w.Intercooler Air Cooled Diesel
Engine speed	Rpm	1800	1800	1800	1800	1800	1800	1800
Pump speed	Rpm	510	510	510	510	510	510	510
High pressure hose	m	20	20	20	20	20	20+7	20+7
Fuel tank capacity	L	140	140	140	140	140	140	140
Weight	kg	1800	1800	1800	1950	1800	1950	1950
Dryweight	kg	1500	1500	1500	1500	1500	1500	1500
Dimension L x W x H	cm	260x145x180	260x145x180	260x145x180	260x145x180	260x145x180	260x145x180	260x145x180

Technical Data		C-650D/80E	C-800/63E	C-1000/48E	C-1000/63E	C-1400/38E	C-2070/26E	C-2500/25E
Motor	Hp	120	120	120	150	120	120	150
	Kw	90	90	90	110	90	90	110
Motor Speed	Rpm 50/60Hz	1400/1750	1400/1750	1400/1750	1400/1750	1450/1750	1450/1750	1450/1750
Working pressure	Bar	650	800	1000	1000	20000	30000	36000
	Psi	9425	11600	14500	14500	1400	2070	2500
Flow Capacity	l/min	80	63	48	63	38	26	25
	Gpm	21.1	16.7	12.7	16.7	10	6.8	6.6
Power Supply		380- 415/3Ph/50Hz 440V/3Ph/60Hz	380- 415/3Ph/50Hz 440V/3Ph/60Hz	380- 415/3Ph/50Hz 440V/3Ph/60Hz	380- 415/3Ph/50Hz 440V/3Ph/60Hz	380- 415/3Ph/50Hz 440V/3Ph/60Hz	380- 415/3Ph/50Hz 440V/3Ph/60Hz	380- 415/3Ph/50Hz 440V/3Ph/60Hz
Weight	kg	1700	1700	1700	1700	1700	1700	1700
Dimension L x W x H	cm	238x140x185	238x140x185	238x140x185	238x140x185	238x140x185	238x140x185	238x140x185

WHEEL BLAST MACHINE

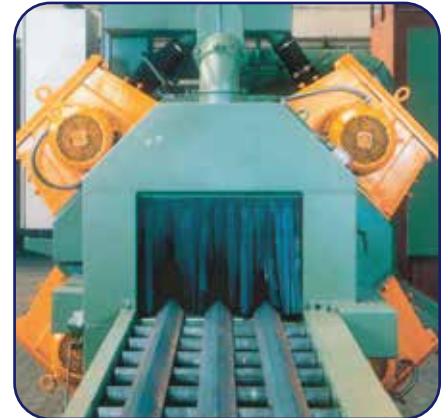


Euroblast design, build, install and commission wheel blast machine for high productivity and efficiency. The machines are designed with in feed and out feed roller conveyors for pipes, profiles and sections.

The abrasives are thrown at a high velocity through a blast wheel made of manganese steel to the substrate and the spent abrasives are recovered, recycled and the dust is separated and the cleaned abrasives are taken back to the storage hopper for continuous operations.



The machine is designed as per customer requirement based on the productivity to be achieved. A built-in dust extraction system ensures the dust emitted during the blasting process is collected separately for safe disposal. All types of recyclable abrasives such as steel shot, steel grit, chilled iron grit etc. are the generally recommended blasting media.



EXTERNAL PIPE CLEANERS

For high productivity and efficiency of external pipe blasting, machines are designed, built and installed as per customer specification. The abrasives are propelled through the wheels at high velocity to blast clean the pipe and the machine is equipped with an automatic recovery and recycling system. A built in dust collector ensures that the dust emitted during the blasting process is collected separately for safe disposal.

The unit comes with variable adjustment for different diameters of pipes to be cleaned. All types of recyclable abrasives are recommended as blast media.



BLAST CABINET



Blast cabinets are operated based on the suction and recovery principle. It is used to blast clean sensitive materials such as turbine blades, engine spare parts, small work pieces etc. to obtain smooth surface finishing. Operations are carried out manually, semi- automatic or fully automatic with electric power and it can have built in dust collector or separate dust collector operated by compressed air. For blast cleaning heavy item, the blast cabinet can be equipped with a suitable turn-table.

Recommended abrasives are, Aluminium oxide, glass beads, garnet and plastic abrasives

Euroblast provides various sizes/models depending on the customer requirement.

BLAST ROOM

For high productivity and dust free environment, Euroblast design, manufacture, install and commission Blast rooms of various sizes depending on the customer requirement. In principle, the abrasive is recovered, processed and recycled with dust extraction system.

Some of the key features are:

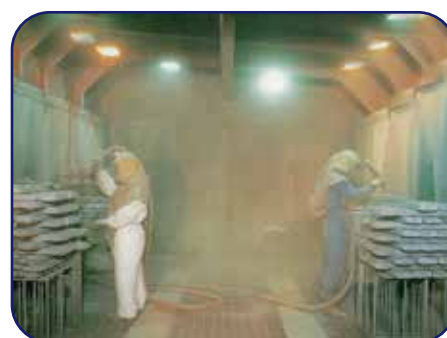
Abrasive recovery system - can be either semi automatic or fully automatic, with either cross conveyor or under floor hoppers - feedback via screw conveyors, vibrating chute or belt conveyor.

Ventilation and dust extraction - effective collection of dust formed during blast cleaning and its separation is of utmost importance. Inlet and outlet openings as well as ducting are adequately dimensioned to ensure constant ventilation of the blast room. Euroblast provides adequate dust collection system as part of the Blast room. The filter media is made of needle felt cloth bags or web-type cartridges capable of extracting dust up to 3 · μ

Linings - Walls are lined with highly abrasion proof and sound dampening special rubber mats.

Lighting - A minimum of 500 to 600 LUX on eye level is provided for unhindered view. Special dust proof and abrasive resistant lamp covers are provided for lights.

Our technical tie-up partner, **SES**, are the pioneers in the manufacture of all types of blast cleaning equipment. **SES** can manufacture and supply a full range of blasting equipment from small portable compressed air blast vessel to large custom built installations, all tailored to suit individual requirements. The **SES** range of high efficiency blast cleaning machines has the ability to clean, prepare and finish an extensive range of standard and complex components quickly, economically and effectively. These specialist-cleaning machines are renowned for their performance and adaptability



PAINT BOOTH



For large operation and for eco-friendly environment paint booths are installed with paint extraction systems. They not only provide dust free environment for proper painting but also extract paint over spray which may be disposed of safely. Euroblast design, manufacture, install and commission both dry type & wet type (no pump) paint booths to customer requirement.

ABRASIVE RECYCLING MACHINE

Versatile, Compact, flexible and well designed out. Either standard or specifically designed for the job can be supplied. The machine is equipped with a centrifugal discharge bucket elevator, vibratory screen, air wash separator, dust collector and electrical control panel. The machine is manufactured with variable speed of air wash separator for adjusting the efficiency of the air-flow depending on the type of recyclable abrasive used (e.g., steel shot/grit, garnet)

Capacity of standard machine is 3m³/hr. (Garnet - 6 to 7 mt/hr, Steel shot or grit - 13 to 14 mt/hr).

Euroblast can also design and supply high capacity plants against actual requirement.



AIR FED LIGHTING



Lights are usually hot when working. This causes cold air from bottom comes and hit on the glasses of light continuously during its operation. Paint booth when working is filled with Thinner / VOC (Volatile Organic Compound in Vapour form) and also Small Paint Particles, mostly they are polymer particle in semi dry state. The air stuck on glass with paint particles the pint particles gets melt and stuck over the glass. In few months of operation we can visibly see paint stuck on glass drastically reduces lights passage. Frequent cleaning of the lights are not an easier way. So Euroblast, in our design we supply a low air pressurized duct using outside fresh air filtered, purge over the light. This air cushion keeps the lights always clean for many years. We also noted this life of lights are extending up to 15+ years with the additional cooling obtained by this air feeding.

EURO VAC

For recovery of light and dry abrasives at short distances and for a recovery rate of 1-2 mtons per hour the Euro-vac is an ideal machine. The machine is operated on compressed air. The machine is fitted with a tungsten carbide lined nozzle for abrasion resistant.



AIR VENTILATION SYSTEMS

Air conductors provide high volumes of air for cooling and ventilating applications. Having no moving parts, operates on compressed air or steam, they are ideally suited for use in hazardous areas.

Rugged, reliable and efficient, blowers are designed to operate on compressed air, steam or water. The high volume of these blowers makes it easy to handle gas, ventilating, drying applications.

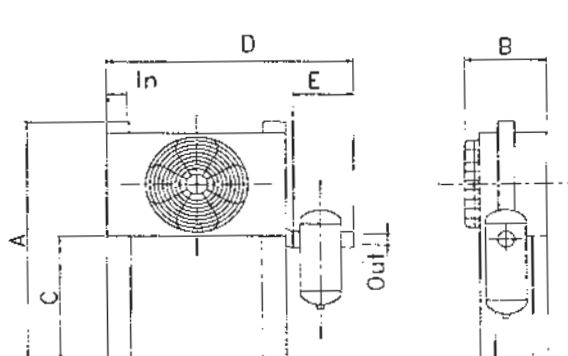


AFTER COOLER

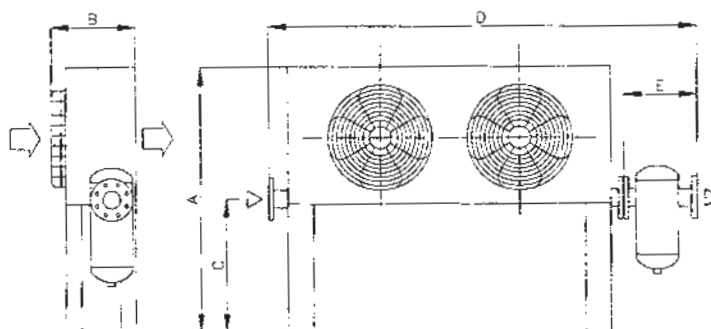


Air-cooled compressed air after-coolers, available as electrically or pneumatically operated models, cool the compressed air with atmospheric air. The compressed air is cooled to approximately 9° C above the ambient temperature. This causes the oil and water vapour to condense which is then removed by the separator. Water cooled after coolers are also available.

After coolers of various capacities from 1M³/min to 75 M³/min of airflow are available. The recommended aftercooler to be used on 750cfm compressor will be the 25 M³/min unit.



RA 10 - 300



RA 400 - 750

MODEL	Code	Max. air flow rate		Power c.	Cooling air	Tension	Connections
		Nm ³ /h	l/min.	Watt	m ³ /h		In/Out
RA 10	020 R001	60	1.000	38	800	230/1/50	1"G
RA 20	020 R002	120	2.000	50	800	230/1/50	1"G
RA 30	020 R003	180	3.000	140	2980	400/3/50	1-1/2"G
RA 40	020 R004	240	4.000	290	3790	400/3/50	1-1/2"G
RA 50	020 R005	300	5.000	290	3790	400/3/50	2"G
RA 65	020 R006	390	6.500	520	6100	400/3/50	2"G
RA 80	020 R007	480	8.000	520	6100	400/3/50	2"G
RA 120	020 R008	720	12.000	550	8700	400/3/50	2"G
RA 160	020R009	960	16.000	550	8700	400/3/50	2-1/2"G
RA 200	020 R010	1.200	20.000	1500	11000	400/3/50	DN 80
RA 250	020 R011	1.500	25.000	1500	11000	400/3/50	DN 80
RA 300	020 R012	1.800	30.000	1500	11.000	400/3/50	DN 100
RA 400	020 R013	2.400	40.000	2x600	17.400	400/3/50	DN 100
RA 500	020 R014	3.000	50.000	2x630	21.000	400/3/50	DN 125
RA 650	020 R015	3.900	65.000	2x630	21.000	400/3/50	DN 125
RA 750	020R016	4.500	75.000	2x630	21.000	400/3/50	DN 150

DEHUMIDIFIER

Refrigerated Dehumidifier is used for internal VLCC tank coating and storage tank in petrochemical industries where the temperature needs to be controlled at 25 to 30 deg C and the relative humidity to be maintained at 40-45% for an acceptable painting application. The units are manufactured to cope up with the Middle East climatic conditions.



The Selection / capacity of the dehumidifier depends on the volume of the tank to be painted. Various models are available from 2500 CMH to 18000 CMH. Euroblast can also supply different capacity with different design conditions as per customer requirements.

Model	Capacity	Total Power
EBRDH 2500	2500 CMH	45 KW
EBRDH 5000	5000 CMH	92 KW
EBRDH 8000	8000 CMH	135 KW
EBRDH 12000	12000 CMH	188 KW
EBRDH 15000	15000 CMH	222 KW
EBRDH 18000	18000 CMH	275 KW

VACUUM RECOVERY EQUIPMENT

Vacuum Recovery Equipment is a compact unit and includes silo, vacuum pump, cyclone, dust collector and control panel. The system is engineered for easy installation, operation, maintenance and increased productivity with superior overall performance. The capacity of the machine depends on the quantity of abrasives to be recovered per hour, the horizontal length and vertical height and the type of abrasives to be used. The heart of the machine is the Roots vacuum pump. The machine can be electric or diesel driven.

Model	Airflow	Power Consumption
EB 1000	1000 m3/h	18.50 KW
EB 2000	1850 m3/h	37.00 KW
EB 3000	2500 m3/h	55.00 KW
EB 4000	3800 m3/h	75.00 KW



DUST EXTRACTION SYSTEM



The dust needs to be extracted / controlled to provide better visibility and clean substrate in tank coating applications. Euroblast offers both portable and stationary dust collector, ideal for grit blasting operation in tanks where confined areas must be ventilated. Euroblast design, manufacture, install and commission high capacity Dust collectors for tank coating depending on the capacity of the VLCC tank, the abrasives used, the number of exchange of air per hour. The standard units are 5000 CMPH , 10000 CMPH, 15000 CMPH and 20000 CMPH. The filtration media is either web type cartridge-type filter (made of cellulose fibre) or needle felt cloth bags. The machine is either equipped with a mechanical shaking system or pneumatic reverse pulse jet system.

DUSTLESS/VAPOR BLAST

All systems feature a CE certified stainless-steel control panel, with four blast selections. The user simply sets the toggles and the machine does all the hard work. Easily adjust both water and grit flow at the machine's grit valve for optimum machine performance. With the water injection system (Patent-Pending) chances of slurry blockages are eliminated! Reducing downtime with maximum work rates, gets the job done

Main Features

- Blasting pressure from 30-160Psi
- 180kg media capacity allowing over 1-1 1/2 hours of blasting
- Air and water filtration system
- Water level monitoring system
- Works wet or dry on demand
- Safe & easy-to-use controls
- Stainless steel construction
- Fully contained, built-in water reserve .

Machine Specifications

- Weight: 250kg (dry)
- Abrasive Capacity: 180kg
- Design Code: PED2014/68 EU/AD200 Merkblatter
- 12 bar rated vessel
- Water capacity: 250 (Litres)
- Water Consumption: 0.2-2 Lpm (Adjustable)
- Grit Consumption: 50-180kg P/Hr (Adjustable)
- Air requirement: 150-500cfm
- (Nozzle size dependent)
- Blast Pressure: adjustable



WET BLASTING

Basic principle of the wet blasting is to add a small quantity of water along with the grit being used. Generally, the ratio is 80% grit and 20% water. The main advantage of this process is that the air pollution is reduced by around 95%. These machines are used in highly sensitive areas wherein dust pollution is restricted. Any mineral abrasive such as coal slag, copper slag and garnet can be used.



Aquablaster	EKS100NP	EKS200NP
Vessel Capacity	100 litres	200 litres
Abrasive Capacity	75 litres	175 litres
Unit Length	850 mm	1210 mm
Width	710 mm	880 mm
Height	1270 mm	1470 mm
Empty Weight	140 kg	180 kg

Compressed Air Supply

- Pressure - up to 9 Bar (130 psi)
- Volume - 3,5 -10 m³ / min (125- 350 cfm)
- A dust- free pressurised slurry system. Simple, easy operation.
- Automatic pressurisation / Self sealing vessel.
- Infinitely variable slurry volume.
- Less water consumption.
- Controlled delivery, save about 30 - 35% blast media with no loss in productivity.

VACUUM BLASTING MACHINE

The strong and versatile vacuum blasting machines are designed based on the principle of suction, recovery and recycling principle. The tungsten carbide lined blast nozzles with an attachment of brush seals the surface during blasting and the spent grit is recovered recycled and dust is extracted to a dust chamber. Various types of brushes (round, angle, flat etc) are used depending on the area to be blasted.

This complies with contemporary environmental regulations and offers a dust free working environment. Vacuum blasting results in substantial savings on grit and waste disposal. The vacuum blasting machine due to its air drives nature, is suitable for explosion risk area such as power station and gas field. The machine is supplied with a dust collector to contain dust.

As a general guideline, 4-6m²/hr on steel surface to SA2 1/2 and 10-12 m²/hr on concrete surface can be blast cleaned.

Technical specifications:

Dimensions	126 cm (L) x 66 cm (W) x 200 cm (H)
Hose length	10 m - 30 m
Empty weight	320 kgs
Blast media capacity	40 litres
Air requirement	>7 m³/min
Nozzle diameter	6.3 mm



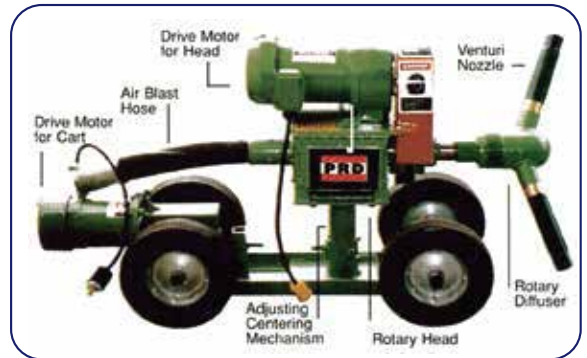
INTERNAL PIPE CLEANERS



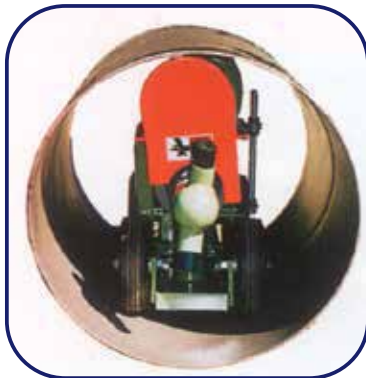
The cumbersome process of internal pipe cleaning of smaller diameter pipes has been made easy by pipe cleaning machines. These units can be operated by a single person and gives 360° coverage. The equipment is pulled manually at the required speed to get the desired cleaning. Circle blast is used to clean pipes from 2" to 12" and spinner blast is used to clean pipes from 8" to 36". Both units are supplied with suitable carriages for easy movement inside the pipe.

The **PRD** Blast system consists of a self propelled cart, rotary head, rotary difuser, venturi nozzles for pipes larger than 24", the self propelled unit moves forward or reverse through the pipe as the rotating head with dual venturi nozzles blasts abrasives onto the interior pipe surfaces. For small pipes and closed vessels a guided boom with rotating head assembly can be provided. To maximise savings, blast media can be recycled, cleaned and re-used many times over with a recovery and re-clean system.

■ **Saves time** by blasting the full 360 inside of pipe surfaces ■ **Lowers labor costs** as much as 75% compared with blast-pot operations ■ **Reduces hazards** with remote controlled operation ■ **No down-time** with PRD-BLAST's extremely reliable operation ■ **Adapts** for various blast media and coating applications ■ **Adapt to blast pipes** from 2 inches to 6 feet ■ **Adapts to cleans** pipes, vessels, tanks, tanker, trucks, ships, and metal containers ■ **Plus recovery, reclaim and dust collector options** available



PRD- Blast is a self propelled rotary internal pipe cleaning system like a white tornado. It saves time, reduces labour cost, reduces hazards with remote control operation and no down time. An optional recovery and reclaim system with a dust collector is also available.



Tractor application	Model	Dia Range (mm)	Head Rotation RPM	Air pressure PSI	Air Requirement CFM
For blasting	I024 BL	250 to 600	30 - 70	80 - 100	300 - 600
	I632 BL	400 to 800	30 - 70	80 - 100	500 - 800
	I01-A	150 to 1,800	30 - 70	80 - 100	600- 800
	I01-C	1,200 to 3,600		80 - 150	1,100 - 1,300
	I01-B	1,800 to 9,500			
For Painting	I024 SP	250 to 600	variable	60 - 100	30 - 50
	I632 SP	400 to 800	variable	60 - 100	40 - 70
	201-A	150 to 1800	variable	60 - 100	40 - 70
	201-C	1,200 to 3600	variable	60 - 100	50 - 100
	201B	1,800 to 9,500	variable	60 - 100	50 - 100

PIPE COATER



Pipecoaters are designed to coat, at uniform thickness, the internals of pipes, tubes and vessels at a faster rate. In pipecoaters 1, 2 & 3, the paint is thrown by centrifugal force at an evenly metered flow from the rotating head which is powered by air-motor. Pipecoater 4 is an economy model, which uses fixed nozzle system.

Model	Pipe diameters
Pipecoater 1	90 mm to 180 mm
Pipecoater 2	180mm to 950 mm
Pipecoater 3	40 mm to 1500 mm
Pipecoater 4	75 mm to 300 mm

For coating of internals of pipes and vessels upto 6300 mm diameter. Single and multiple components can be processed. Available with automatic feed.

SURFACE PREPARATION - COATING REMOVAL

For concrete profile reduction projects like trip hazards or concrete pours that need leveling our line of scarifiers provide the power and brawn needed to make light work of tough job. Many years of experience in design and operation of surface Preparation equipment have been integrated with the latest computer design technology to produce the Scarifier range. Scarifier is strong and reliable with modern, clean lines which will appeal to the image conscious company. Close attention to detail as resulted in an efficient machine with optimum weight distribution which ensures a high work rate. Every component has been carefully designed and field tested for strength and reliability.



UP TO 12" (320MM)

WORKING WIDTH

Take on jobs of all sizes
with units from 8 – 12"



OPTIONAL SELF- PROPELLED DRIVE

Less labor fatigue and faster
production rates



HIGH-QUALITY BUILD

Made in the UK by
seasoned fabricators and high
quality components



VARIABLE SPEED OPTION

Depending on the job conditions,
different speeds are needed.
Easy speed control

BEF 200N

Highly Productive & User-Friendly 200MM (8") Scarifier

The BEF200N is the newest addition to the BEF scarifier line that has been proven by contractors all around the world for over 30 years. This scarifier is perfect for general surface preparation and coating removal on small – medium size jobs. Available in single phase, 3 phase and petrol driven engine types



Features

- Rigid, compact design
- Quick Lift – Pulls Cutters In/Out of Cut
- 50mm dust extraction port Dust free when operated with a suitable vacuum
- Large diameter wheels for excellent mobility and stability
- Welded construction is rigid, strong and lower control
- Fine Adjust- Screw type raise and lower control
- Firm engine mounting plate
- Front wheels protected from debris
- Height adjustment at the handle

BEF 275

The BEF 275 Multiplane offers the user a machine of compact proportions giving outstanding performance rates in preparing and planing concrete floors. The infinitely variable depth control allows for precision planing and texturing whilst maintaining maximum cutter life.



Features

- 275mm (10.8") working width
- 400v 3-phase, gasoline/petrol versions
- Rigid, compact design
- 50mm dust extraction port
- Dust free when operated with SPE 316 vacuum
- Six flail shafts, heavy duty T.C.T. cutters
- Forward mounted cutter drum for perfect balance
- Side plate access for quick and easy cutter drum removal
- Handle height fully adjustable for operational control
- Monocoque construction is rigid, strong and accurate
- Accurate depth control for precision surface
- texture and maximum cutter life

BEF 320

When you need a high class scarifier...

BEF 320 is the most advanced machine of its type. The BEF 320 heavy Duty Multiplane is a robust self propelled hydrostatically driven machine having infinitely variable speed control to each independent drive wheel motor.



Features

- 320mm (12.6") working width
- 400v 3-phase, gasoline/petrol, diesel powered versions
- Heavy duty design for larger projects
- 50mm dust extraction port
- Dust free when operated with SPE 316 vacuum
- Accurate depth control for precision surface textures and maximum cutter life
- Hydraulic drum raise and lower
- Infinitely variable speed
- Self propelled hydrostatic drive
- Forward and reverse controls
- Up cutting drum for efficiency
- Monocoque construction/fabrication

SURFACE PREPARATION - GRINDING - POLISHING

For concrete floor preparation and to remove tough surfaces with ease, these grinders have been used all around the world for over 30 years. Direct drive technology is used in all floor grinders which results in maximum production and reliability. We have single, double, 3 head and 4 head design with planetary motion for all different type of job sizes.



EXTREMELY AGGRESSIVE

Prep or remove tough surfaces with ease



SINGLE, DUAL AND 3 HEAD DESIGN

For all different types of job sizes



DIRECT DRIVE TECHNOLOGY

For maximum production and reliability



PROVEN QUALITY

These grinders have been used all around the world for over 30 years



DFG 280

Excellent value single head grinder-ideal for small projects and rental!

The perfect machine for every tight spot and small corner. NEW Floating head design, 10" Grinding Head, Folding Handle with multiple settings for height adjustment, Built in Lifting Handles, Edge grinding capabilities on BOTH sides, Flexible 'moreflex' coupling and Dust Free Vac Port.



DFG 250

The single head diamond grinder for the professional!

A successful diamond grinder must give the operator complete control and at the same time have enough weight to act directly onto the grinding heads to facilitate accurate and rapid grinding. The DFG 250 is available in 3 phase electric or petrol engine powered versions and is ideally suited for the grinding of most types of concrete floors.



DFG 400

Meeting the demands of the more general contractor!

The DFG 400 Floor Grinder has been developed to meet the competitive demands of the general floor grinding marketplace. The equipment is easy to use meeting the requirement of rental companies and contractors. Twin grinding heads driven by heavy duty gearboxes ensure high productivity and reliability



DFG 460

The industry leading Portable Triple Head Planetary Floor Grinder

The DFG 460 Triple Head Planetary Floor Grinder has been developed to provide a medium sized, portable, product that grinds to a polished finish using orbital grinder principles. A direct drive system, coupled with heavy duty gearbox ensures maximum torque being available at the grinding heads.



DFG 500

Complete operator control in the Grinding Process!

To successfully grind large floor areas a heavy duty floor grinder is required. The DFG 500 gives complete operator control and at the same time has the correct weight to act directly onto the grinding plates to facilitate accurate and rapid grinding.



DFG 700

The Heavy Duty Triple Head Planetary Floor Grinder!T

THE DFG 700 Triple Head Planetary Floor Grinder has been developed to meet the increasing demand for this principle and grinding materials to a finished product. The DFG700 has a variable speed control devised to suit various applications.



PREDATOR 2400

Designed to handle every size job imaginable with power, performance and durability.

At Innovatech, our Predator line off-floor grinder machines is designed to handle every size job imaginable with power, performance and durability. Our P-2400 model is the ideal choice for light commercial applications, providing just the right touch for all concrete floor grinder needs.



PREDATOR 3200

The Predator P 3200 is a high performance 32" 4-head planetary grinder

The 4-head planetary system has been designed to maximise stability and reduce vibration at operating speeds, ensuring a smooth and efficient grinding / polishing experience.

King®

Airless Sprayers for
Protective Coatings Applications



MOTOR PACKAGE	XL3400 MOTOR			XL6500 MOTOR					XL10000 MOTOR		
KING SPRAYER MODEL	XL25-290	XL30-220	XL40-180	XL45-290	XL50-250	XL60-220	XL70-180	XL90-145	XL45-430*	XL70-290	XL80-250
Output per cycle	290cc	220cc	180cc	290cc	250cc	220cc	180cc	145cc	430cc	290cc	250cc
Maximum Working Pressure, psi (bar, MPa)	2375 (164, 16.4)	3150 (217, 21.7)	3800 (262, 26.2)	4550 (313, 31.3)	5200 (359, 35.9)	6000 (417, 41.7)	7250 (500, 50.0)	7250 (500, 50.0)	4800 (331, 33.1)	7250 (500, 50.0)	7250 (500, 50.0)
Maximum Air Input Pressure, psi (bar, MPa)	100 (7, .07)	100 (7, .07)	100 (7, .07)	100 (7, .07)	100 (7, .07)	100 (7, .07)	100 (7, .07)	80 (5.5, .55)	100 (7, .07)	100 (7, .07)	88 (6, .60)
Output at 60 Cycles/min gpm (lpm)	4.6 (17)	3.4 (12.9)	2.9 (11)	4.6 (17)	4.0 (15.2)	3.4 (12.9)	2.9 (11)	2.3 (8.7)	6.7 (25.4)	4.6 (17.4)	4 (15.1)



Applications

Polyurethane Foam

- Wall insulation
- Tank and pipe coating
- Roof insulation
- In-plant OEM
- Rim and band joist

Polyurea

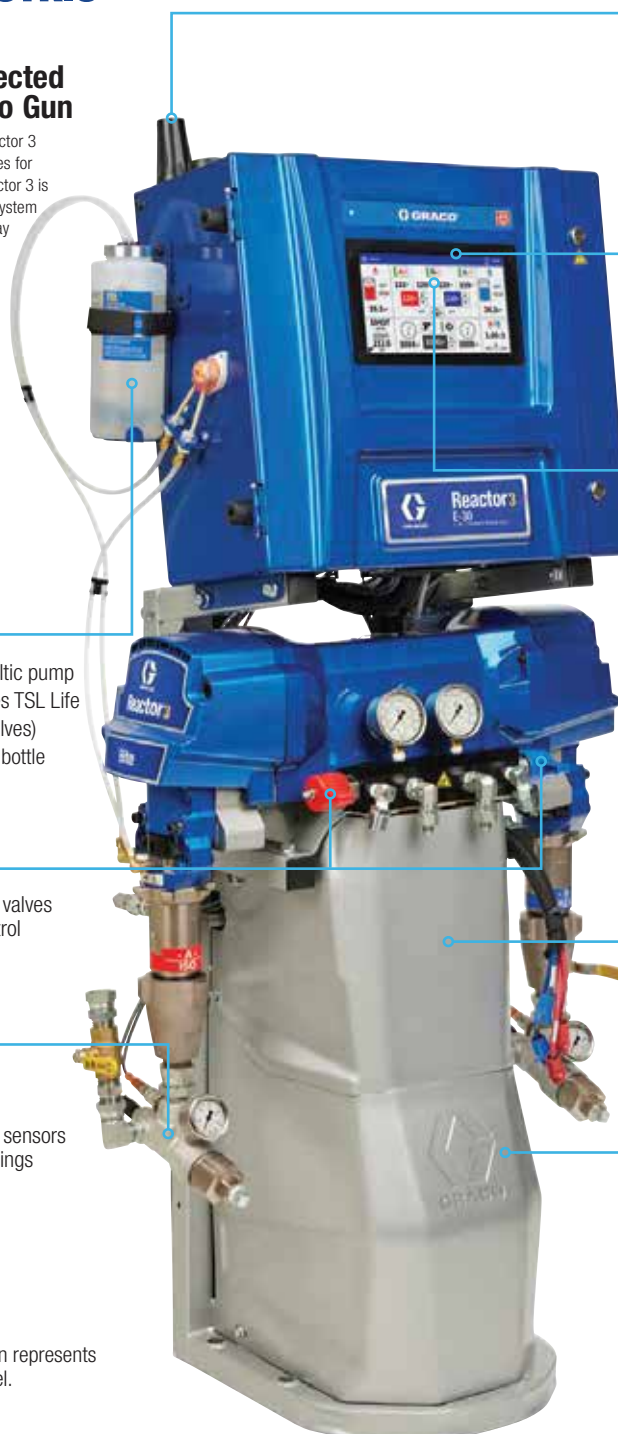
- Concrete joint filling
- Potable water tanks
- Truck bedliners
- Adhesives and caulks
- Marine and shipbuilding
- Wastewater treatment
- Secondary containment
- Waterproofing

SPRAY FOAM AND POLYUREA EQUIPMENT

REACTOR 3 ELECTRIC PROPORTIONER

The ONLY Fully-Connected System From Drum to Gun

Upgrade your rig with a powerful NEW Reactor 3 proportioner, built with advanced capabilities for spray foam and polyurea applications. Reactor 3 is designed to communicate with the entire system to simplify the operator's job, optimize spray parameters and maximize productivity.



Reactor Connect

- Real-time dashboard and reports via cellular connectivity
- Improved cellular antenna
- New GPS antenna
- GPS location available in Reactor Connect

New Touchscreen Advanced Display Module (ADM)

- Large new touchscreen interface
- Intuitive operation and navigation
- All spray operations from one screen

New Independent Hose Control

- Control A and B materials to different temperatures for improved pressure balancing
- Optimizes yield

New Advanced Electric Design

- Brushless motor for improved pressure/flow performance
- New temperature control boards for independent hose heat
- Voltage jumpers for easy changing between voltages
- Robust UL listed electrical hose connectors are color coded and keyed for error proof assembly
- New Reactor 3 exclusive: connect with Tier 4 engines for ADM engine diagnostic

Oval Gear Flow Meters (under shroud)

- Verifies fluid ratio
- Provides real-time ratio data: displayed on the ADM and Reactor Connect
- Accurate for a wide range of fluid viscosities

REDUCED SIZE

- Reduced footprint provides additional room in your rig
- Compact design protects the flow meters and hose connections from being damaged in your rig

New ISO Lube Pump

- Active ISO Lube system with peristaltic pump
- Automatic timed circulation improves TSL Life
- Reduced maintenance (No check valves)
- New larger easy-to-change ISO lube bottle

New Fluid Manifold

- Redesigned with side-mounted fluid valves for easier turning and improved control

New Inlet Filters

- New easy-to-maintain design
- 2X larger filter area
- Separate temperature and pressure sensors for more accurate temperature readings

* Picture shown represents an Elite model.

REACTOR FOR PLOYUREA

Features

The Reactor 3 E-XP2 is a polyurea system build for customers looking for a machine with more output and capabilities. It is ideal for use on medium to large jobs and applications. The E-XP2 is an ideal machine that can be the workhorse of your fleet, capable of handling most types of jobs with a good mix of output, heat and features.

Upgrade your rig with a powerful NEW Reactor 3 proportioner, built with advanced capabilities for polyurea applications. Reactor 3 is designed to communicate with the entire system to simplify the operator's job, optimise spray parameters and maximise productivity.



ISO Lube Pump

- Active ISO Lube system with peristaltic pump
- Automatic timed circulation improves TSL Life
- Reduced maintenance (No check valves)
- New larger easy-to-change ISO lube bottle

Touchscreen Advanced Display Module (ADM)

- Large new touchscreen interface
- Intuitive operation and navigation
- All spray operations from one screen

Independent Hose Control

- Control A and B materials to different temperatures for improved pressure balancing
- Optimises yield

Advanced Electric Design

- Brushless motor for improved pressure/flow performance
- New temperature control boards for independent hose heat
- Voltage jumpers for easy changing between voltages
- Robust UL listed electrical hose connectors are colour coded and keyed for error proof assembly

Reduced Size

- Reduced footprint provides additional room in your rig
- Compact design protects the flow meters and hose connections from being damaged in your rig



There are various applications to do with Polyurea protective coatings business.

- Truck Beds
- ATV/Off Road
- Trailers
- Boat Decks
- Utility
- Commercial
- Swimming Pools
- Waterproofing
- Cold Storage
- Vans
- Sculpture Making
- Storage Tank Lining
- Military Vehicles
- Custom



PROTECT A WIDE VARIETY OF SURFACES

Wood, Steel, Concrete, Aluminum, Fiberglass, Polystyrene, Concrete, Styrofoam, Drywall, and much more



A Smart Alternative to Hand-mixing

PLURAL COMPONENT FIXED RATIO

**EASY
TO OPERATE**
for a much quicker start-up.

With proper training, Operators are up and running quickly. The Graco XP runs right out of the box with fast set-up time.

Outlet manifold and valves

- Fluid pressure gauges to monitor pump output
- Provides automatic overpressure relief
- Includes circulation back to the supply for pump priming, purging, or relieving outlet pressure
- Allows fluid warm-up circulation when optional heaters are used

Mix manifold

- Provides simple fluid control for mixing or flushing
- Accurately dispenses A and B fluids to the static mix tube
- Handles high-solids coatings with large ports and low pressure drop
- Choose to use mix manifold remotely to reduce solvent and material waste

Xtreme® Pump Lower

- Standard Severe Duty® coating on rods and cylinder maximizes wear life
- Quick knockdown design and throat seal cartridges provide fast and easy maintenance
- Multiple sizes available to provide various fixed mix ratios
- Easily change one or both lowers to get desired mix ratio



XL Air Motor

- Simple maintenance
- Isolated poppet valves for reduced icing potential
- Less pulsation

Optional Electric Heated Hose Controller

- Visual indicator of hose control temperature
- Standard option on select XP and XM units

Viscon HP Primary Heaters

- Reduces coating viscosity and improves spray pattern
- 4000W

Material hoppers

- Side-mounted 7-gal (26 liter) hoppers hold A and B components
- Made of rugged polyethylene - unaffected by harsh solvents
- Optimized for direct pump feed

Heating-Fluid Circulation Kit and Viscon HP Heater

- Efficiently heats Xtreme-Wrap water-heated hose and remote manifold (Heated Hose sold separately)
- Quick disconnects and brass fittings for water lines
- Durable with fast heat up times



Electrical Junction Box

- Power distribution to each heat zone
- Two spare zones for flexibility
- Less hassle and faster setup time

**REDUCE
MAINTANANCE
COST**

for a much quicker start-up.

Engineered to proportion with two pumps instead of three, the Graco XP reduces your cost of ownership with fewer components.

Build a System for Your Application

Fully configurable – simply select the accessories required for your material and application

PLURAL COMPONENT VARIABLE RATIO

More flexibility means more affordability

With Graco XM Plural-Component Sprayers, you have the flexibility to select the essential equipment on your system – no more, no less – to complete your jobs accurately and reliably. If your application does not require heaters, feed pumps or hoppers, this flexibility may provide you with a lower cost option. The components shown below are available as options on your configured unit. Some assembly is required.

Junction Box

- Conveniently houses switches and breakers for heaters
- Not approved for hazardous locations

Hose Rack Kit

Viscon® Fluid Heaters

- Choose standard or model approved for hazardous locations

Rear Mounted Hoppers



Transfer pumps

- Choose Graco T2 or Monark® 5:1

Twistork® Agitator

- Helps maintain proper material consistency

Material Hoppers

- Side or rear-mount
- Choose 76 or 26 liter (20-gal or 7-gal)

Hopper Heater

- Excellent for highly viscous materials
 - Standard 240-volt, 1500 watt immersion heaters
- Use optional circulation kit (256273*) for hazardous locations

*Viscon fluid heater approved for use in hazardous locations must be ordered separately

Caster Kit

Graco XM Plural-Component Sprayer (base model plus options)**

** Not approved for use in hazardous locations unless the base model, all accessories and wiring comply with national, state and local codes

ST MAX - ULTRA MAX II - MARK V - MARK VII - MARK X

- St Max for little professional jobs: residential houses, little commercial projects, parking lots...
- Ultra Max II for medium to large painting jobs inside as well as outside
- Mark Max top of the line electric sprayers for airless spraying of paints, fire retardant and airless plaster



HYDRAULIC BIG RIG AIRLESS SPRAYER

The GH sprayers are powerful hydraulic sprayers that allow you to spray a wide range of materials: from paint and airless plasters to roofing, waterproofing materials and protective coatings.

Our compact entry level sprayer GH833 is ideal for high production professional contractors. The GH933 uses maximum pressure to handle the toughest industrial coatings. Our GH 733 / 933 / 1017 / 2570 / 5040 can be customized for a wide range of applications, trading off high pressure with high flow rates.

PROFESSIONAL ADVANTAGES

- **Ultimate Portability**
No air compressor to haul around, so no issues with air supply and air hoses.
- **Maximum Performance**
The proven 9.7 kW (13 HP) Honda® engine with integrated fuel tank, supplemented with an optional electric start system.
- **Extreme Versatility**
Trade off high pressure with high flow and select the right sprayer for the right job.



GH 733

GH 833

GH 933

GH 1017

GH 2570

GH 5040

INDUSTRY-LEADING SOLUTIONS FOR FRP

Raising the bar for high-performance FRP equipment

Engineered with industry-proven Graco components, Graco FRP (Fiber-Reinforced Plastic) Systems and RS™ (Resin Spray) applicator guns provide you with a system that is technologically advanced, durable and easy to use.

Superior ratio control

- Consistent ratio for consistent cure
- Higher quality parts
- Less product waste and remakes

Ensures product quality

- Optional DataTrak™ monitors resin usage and acts as a qual
- Reports how much resin is used per piece, shift or day
- Tracks cycles for preventive maintenance schedule
- Displays real time flow rate – eliminates material waste due to worn spray tips

Lower cost of ownership

- Easy to maintain
- Fewer repair parts
- Long-lasting seals mean less maintenance downtime

Saves material costs

- No surge bottle necessary
- Less solvent, less resin needed to prime the pump



PRESSURE WASHERS

HYDRA CLEAN PRESSURE WASHERS

Spray down portability for sanitary applications

- Efficient cleaning with water, detergent or chemical solutions
- Supports. multiple guns
- Designed to use with cold or hot water up to 93°C (200 F)
- Use with open-head universal drums
- Fits most pressure. flow and material requirements



DENSIN - MERLION PLUS SERIES

Electrical Driven

The MERLION PLUS Series offer powerful and cost efficient cleaning for professional users.



Applications:

- Removing paint and rust on steel and concrete surfaces
- Removing lime, scale deposits & marine growth
- Deck cleaning & cargo hold cleaning
- Dust free wet sand blasting (Optional accessories)

Technical Data		Merlion Plus E-350	Merlion Plus E-500
Pressure	Bar/psi	350/5075	500/7250
Flow	L/min/USgpm	21/5.5	16/4.2
Power Consumption	Kw/Hp	17.9/24	17.9/24
Power Supply	V	440/3ph 60Hz	440/3ph 60Hz
Motor Spec	Rpm	1750	1750
Weight	Kg	220	220
Dimensions LxWxH	mm	1060x490x938	1060x490x938
IMPA Code	Number	59 08 58	59 08 59

Diesel Driven

The MERLION Diesel Powered Heavy Duty High-Pressure Water Blasters offer powerful and cost efficient cleaning for professional users.

Applications:

- Removing paint, rust, markings and graffiti on steel and concrete surfaces.
- Cleaning scaffolding material.
- Cleaning construction machinery and equipment.
- Deck cleaning and cargo hold cleaning.

Industries/Segments

- Mining.
- Marine.
- Forestry.
- Agriculture.
- Fish Farming.
- Wind Powered Plant.
- Building & Construction.
- Highway & Road Maintenance.



DENSIN - BLUE LINE SERIES

Applications:

The BLUE LINE Series are used for the following:

- Daily general cleaning of deck, stairway, and structures, for the removal of stains, dirt and other debris from the surfaces

Standard Accessories:

- Trigger gun and double barrel lance with pressure regulator
- Electrical cable, oil resistant - 1 Om
- High pressure hose 3/8" - 1 Om



Features & Benefits:

- Low speed motor / pump unit
- Non corrosive materials in pump, fittings & pipes
- 3 fully ceramic pistons
- Long life seals
- Stainless steel valves
- Built-in by-pass/safety valve
- Class F motor with overload relay
- Inlet/outlet quick couplings
- Easy access for service and maintenance
- High durability from low speed motor/pump unit

Technical Data		C-110E	C-170E	C-200E
Pressure	Bar/psi	110/1600	170/2465	200/2900
Flow	L/min/USgpm	11.7/3.1	15.2/4.0	16.5/4.4
Power Consumption	Kw/Hp	2.2/3.0	4.4/6.0	5.5/7.5
Power Supply	V	110/1ph 60Hz 220/1ph 60Hz	220/3ph 60Hz 440/3ph 60Hz	220/3ph 60Hz 440/3ph 60Hz
Motor Spec	Rpm	1750	1750	1750
Weight	Kg	45	46	56
Dimensions LxWxH	mm	720x480x900	720x480x900	720x480x900
IMPA Code	Number	59 08 52	59 08 54	59 08 56

LineLazer IV 250 SPS

Features

- 1 **Automatic Gun Control System**
Manual or automatic paint and bead guns with the push of a button
- 2 **Electric Clutch System**
Disengages engine for fast starting
- 3 **25 Gallon (95 L) Paint Hopper**
Extended striping time with large capacity hopper
- 4 **Honda® 9 HP GX Engine**
Industry proven performance with the most demanded engine by contractors
- 5 **Graco Hydraulic Motor System**
Graco's no-stall hydraulic motor for uninterrupted performance
- 6 **Flex Plus™ Guns**
Industry proven paint guns with LineLazer tips provide precise lines

- 7 **Endurance Piston Pump System**
Long life pump provides precise flow for wide range of striping materials
- 8 **Rear Gun Mount System**
Provides straighter long lines – perfect for bike paths, airports and other long line jobs
- 9 **Self-Centering Front Wheel**
Eliminates one user interface for simpler operation. Foam filled for stability



LineLazer IV 200HS

Features

Hydraulic Power

- ▶ Cool running hydraulic power
- ▶ No-stall design
- ▶ Field proven performance

Rear Gun Mount System

- ▶ Ability to place the guns near the rear axle for applying straighter long lines and smoother curved lines
- ▶ Combine with Auto-Layout System for one pass dot marking and line striping

Digital Display

- ▶ Display shows psi, mph, mils-instant average, lineal foot, gallons and mils-total—all on one screen
- ▶ Simple push button design makes it easy to use
- ▶ Back-lit feature can be seen in all conditions

Chromex™ Pump Rod

- ▶ Long life rod treatment
- ▶ Four times harder than ordinary chrome

Exclusive Durable Can Holder Design

- ▶ Folds up for on-board storage
- ▶ Built to last in *all* conditions
- ▶ Proven performance



LineLazer IV 3900/5900

Features

Advantage Drive System

- ▶ Heavy-duty clutch automatically adjusts and aligns for long life
- ▶ Hardened gears offer proven durability with quiet, efficient operation

Lightweight Gun Holder

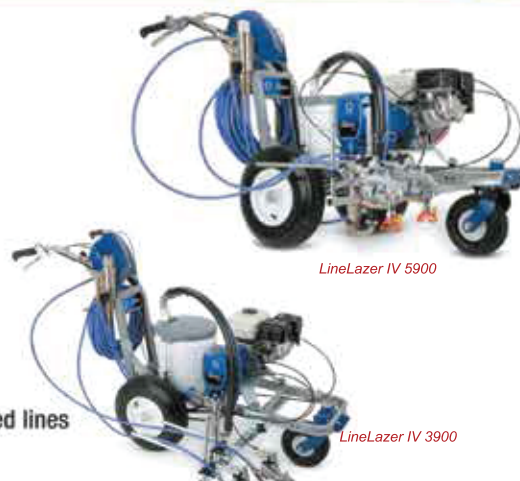
- ▶ To minimize gun movement caused by rough pavement conditions
- ▶ Durable, extruded aluminum design
- ▶ Spring-assisted cable return for positive gun shut-off

Advanced Vibration Reduction System

- ▶ Removes engine vibration, taking line quality to the next level

Rear Gun Mount System

- ▶ Place the guns near the rear axle for straighter long lines and smoother curved lines
- ▶ Great gun visibility, especially on glass bead applications



LineLazer IV 5900

LineLazer IV 3900



Note: Unit can be customized to work with well-known PFP Materials from International Paint Chartek and Interchar, PPG Pittchar XP, Carboline XI, Sherwin Williams Firetex M90, Jotun Jotachar



CoverCat PFP Spraying Machine Provided with following features & support:

- All CoverCat equipment has been certified for use with current PFP materials from International Paint Chartek and Interchar, PPG Pittchar XP, Carboline XI, Sherwin Williams Firetex M90, Jotun Jotachar, approvals date to 1990 which is unequalled
- Semi Automatic - Give liberty to operator to manage system based on material & ambient condition.
- Heavy Duty Air Motor - Utilising the latest generation CoverCat 500 air motor.
- Heavy Duty Stainless Steel - Material Tanks.
- Mechanical Mix-Ratio / Metering - Technically ZERO error; Proven Track Record of 21 years.
- Aesthetics - Quality work-manship.
- Extensive Technical - Support & 3-days comprehensive training on PPE, Hands-on operation, Check Ratio, General Operation & safety Guideline.

CoverCat provides a full range of equipment options to assist the applicator of epoxy intumescent materials, with additional technical support and certified training programs.

ArcMaster™ 300

Twin-wire arc gun designed for high reliability and trouble-free wire feeding.



- Lightweight gun (4.2 lb / 1.9 kg) made of the toughest materials for reliable operation in harsh industrial environments
- Spray head with interchangeable nozzles, supporting a wide range of atomizing air flows (including a high-velocity option) to meet the required coating structure
- Powerful Swiss made DC motor with planetary gear head enclosed in a dust proof protective housing provides smooth feeding of wire stock and ensures a stable arc
- Streamlined ergonomic design
- Hardened steel wire guides
- Wire feed rollers provide reliable wire grip for slip-free operation with both hard solid and malleable cored wires
- Maintenance free worm gearbox with life expectancy of 10,000-12,000 hours
- Tungsten-copper alloy contact tips

Applications

- Wear resistance
- Anti-corrosion
- Repair and maintenance
- Corrosion protection of steel and naval constructions
- Corrosion protection of concrete structures
- Corrosion protection off shore

The ArcMaster™ 300 is a durable high-performance twin-wire arc spray system designed for reliable and cost effective deposition of a full range of metal coatings. The gun utilizes a highly reliable DC motor-based wire feeding mechanism, which, along with a smart spray head design, ensures a consistently high coating quality. The lightweight and robust one-piece polymer frame of the gun contains just a handful of additional metal parts, which makes it very easy to operate and service. Coatings applied with the ArcMaster™ 300 feature an uncommonly low porosity for an arc process.

ArcMaster™ can be ordered in a high feed rate (HFR) configuration that is optimized for materials with low melting points, such as zinc and aluminum.



Wire Types	
Solid Wires	
Cored Wires	
Wire Size	
1/16" (1.6 mm)	
2.0 mm	
3/32" (2.3 mm)	
Common Use	
Aluminum	
Molybdenum	
Babbitt	
Nickel	
Copper	
Bronze	
Steel	
Tin	
Cored Wires	
Zinc (HFR)	
Zinc-aluminum (HFR)	
Aluminum (HFR)	
Aluminum-magnesium (HFR)	
Max Spray Rate	
Al	7 kg/h
Steel	15 kg/h
Bronze	18 kg/h
NiCr	16 kg/h
Mo	9 kg/h
Cored Wire	12 kg/h
Zn	30 kg/h (HFR)
ZnAl15	28 kg/h (HFR)
Al	10 kg/h (HFR)
AlMg5	9.8 kg/h (HFR)
Air Consumption	
50 SCFM @ 125 PSI	
Max Current	
300 A	
Power Supply	
Current	450 A
Voltage	18 - 38 V
Weight	174 kg
Use Options	
Robot Mounted	
Manual Spraying	

PROCESS PUMPING

Husky® Double Diaphragm Pumps:

- Available in 1/4 inch (6.3 mm) to 3 inch (76.2 mm) sizes
- Flow rates up to 300 gpm (1,135 lpm)
- Stall-free, low pulsation air valve provides a smooth and rapid changeover



Air-Operated Double Diaphragm Pumps for Fluid Transfer

EP Series Hose Pumps:

- One hose compression per revolution extends hose life
- Inexpensive to maintain – no valves, seals or glands
- Pumps are reversible and can be used to empty lines or clear blockages



Peristaltic Hose Pumps for Industrial Metering and Transfer

Fast-Flo® 1:1 Air Operated Piston Transfer Pumps

- Flow rates up to 5 gpm (18.9 lpm)
- Immersed inlet for faster priming of heavier fluids
- Air-powered for high reliability and low cost



Air-Operated Piston Transfer Pumps for Lower Viscosity Fluids

AUTOMATIC LUBRICATION



Dyna-Star™ & GL-I™ Injectors

High ratio hydraulically-powered lubrication pump and field adjustable injectors



G3®, E-Series™ Pumps & MSP, USP Valves

Graco pumps and series progressive blocks offer time-tested, field proven dependability



MBL, GBL 7500 Pumps & MHH Valve

Compressor lubrication pumps and components tested tough for continuous-duty use



Controllers & Accessories

Compressor lubrication pumps and components tested tough for continuous-duty use

MAINTENANCE LUBRICATION



Hose and Cord Reels

Save time with fast fills and shine a light on your work with durable solutions made for rugged environments



Meters and Valves

High-flow dispense options and accessories to keep you working efficiently



Dispense and Transfer Pumps

Dependable field-proven pump performance for dispense or transfer



Matrix® Fluid Management System

Account for fluids on your site or shop by vehicle or technician number. Get alerts for refill and restock

PAINTING EQUIPMENT ACCESSORIES



**Airpro Siphon
Cup Gun**



**Airpro Gravity
Cup Gun**



**Silver Plus
2-Finger**



**Silver Plus
4-Finger**



FTX 2/4 Finger



**XTR-5 / XTR-7
Airless Gun**



**Contractor
Gun**



TexSpray Gun



**Graco Cleanshot
Pole Gun**



Painting Mask



Machine Filters



Gun Filters



Gun Swivel



RAC Tip Holder



**RAC holder
with LTX tip**



RAC Tip



XHD Tip Holder



**Ultramax Handheld
Airless Sprayer**



Jet roller



Tip Extension



TSL Oil



**High Pressure
Washer Gun**



Paint Hose



**Pneumatic
Agitator**



Twistork agitator

Assessment of soluble salts before applying a coating is essential

Blasted surfaces may look perfect but one of the most harmful contaminants cannot be seen with the naked eye
SALTS!

Surfaces can be contaminated with salts by different causes:

*Air pollution
Maritime environment
Contaminated blastmedia*



DEWPOINT METER



WET FILM WHEEL



NON-CONTACT
SURFACE THERMOMETER



TQC BRESLE KIT

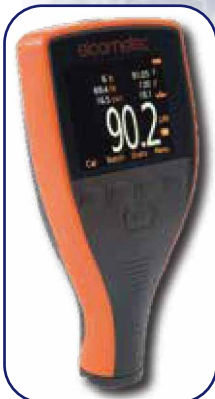


MECHANICAL
PROFILE GAUGE

**An absolute clean surface is a must
for successful coating work**



WET FILM COMB



ELECTRONIC COATING
THICKNESS GAUGE



HYDRAULIC
ADHESION TESTER



PORTABLE
HOLIDAY DETECTOR



NON-DESTRUCTIVE
WOOD MOISTURE
DETECTION METER



SURFACE THICKNESS GAUGE



SURFACE THICKNESS GAUGE



WET FILM THICKNESS GAUGE



PIN HOLE DETECTOR



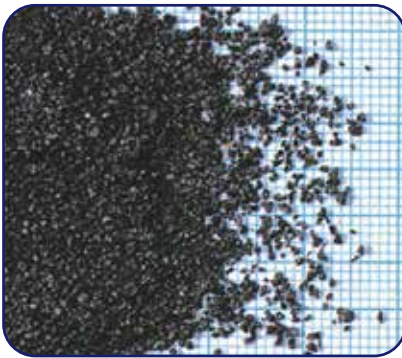
MATERIAL WALL
THICKNESS GAUGE



*Salt trapped under a coating layer will
attract moisture due to its hygroscopic
nature.
Corrosion and pitting will occur rapidly.*



COPPER SLAG GRIT - Iron Silicate



Description: Copper Slag is a blastcleaning grit made of granulated slag from metal melting processes. (also called Iron-silicate).

Applications: Blastcleaning of steel and stone/concrete surfaces, removal of mill scale, rust, old paint, dirt etc. Suitable for SA-3, SA-2_{1/2} and SA-2.

Grain Sizes

0.1 - 0.8 mm
0.2 - 1.5 mm
0.5 - 1.5 mm
0.2 - 2.5 mm
0.5 - 2.0 mm
0.5 - 2.5 mm

Packing: 3-ply paper bags, 50 kgs content, on shrinkfoiled export pallets.
-Strong woven polypropylene big bags, with 4 lifting loops.
- Loose Bulk shipments
- Transferable silos to site

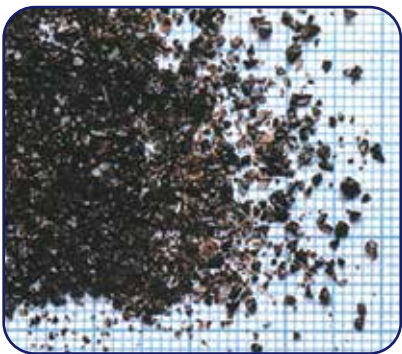
Chemical Composition (Indication only)

SiO₂ : 25 -35 % in bound form, < 1% free silica
Al₂O₃ : 4 - 9 %
Fe₂O₃ : 40 - 45 %
CaO : 4 -9 %
K₂O : 0.1 %
MgO : 0.05
TiO : 0.1 %
Na₂O : 0.2%
Free silica : < 1 %

Properties:

Shape. : Sharp and angular
Colour : grey / black
Hardnes : 7 Mohs
Specific density : 3.5 kgs/dm³
Loose bulk density : 1.8 kgs/dm³
Chloride Content: <25ppm
Conductivity : <25mS/m

COAL SLAG GRIT - Aluminium Silicate



Description: Coal slag is an aluminium silicate blastcleaning grit made of coal slag from coal fired power stations.

Applications: Blastcleaning of steel and stone/concrete surfaces, removal of mill scale, rust, old paint, dirt etc. Suitable for SA-3, SA-2_{1/2} and SA-2, as well as sweep blasting.

Grain Sizes

Type A1	0.2 -0.6 mm	Type B1	1.2 -2.2 mm
Type A2	0.2 -1.0 mm	Type B2	0.8 -2.2 mm
Type A3	0.2 -1.4 mm	Type B3	0.5 -2.2 mm
Type AB	0.2- 2.2 mm	Type BC	0.8 -3.0 mm
Type X	0.5 -1 ,6 mm		

Packing: 3-ply/ 6-ply paper bags, 50 kgs content, on shrinkfoiled export pallets.
-Strong woven polypropylene big bags, with 4 lifting loops.
-Other packing options on request
ISO Quality System Certificate ISO-9002, Certificate no. K10475/03. Product standards: ISO 11126/4 and 11127.

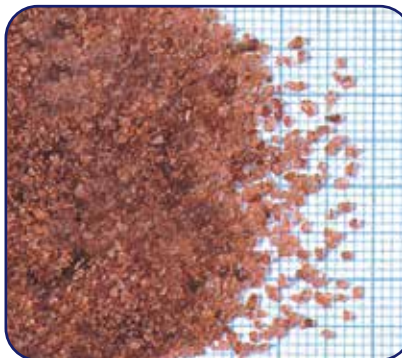
Chemical Composition (Indication only)

SiO₂ : 45 -52 % in bound form, < 1%. free silica
Al₂O₃ : 24- 31 %
Fe₂O₃ : 7 -11 %
CaO : 3-8 %
K₂O : 2-5 %
MgO : 2-3 %
TiO : 0-2 %
Na₂O : 0-1%
Other traces only

Properties:

Shape. : Sharp and angular
Colour : brown/black
Hardnes : 7 Mohs
Specific density : 2.4-2.6 kgs/dm³
Loose bulk density : 1.3-1.4 kgs/dm³
Water Soluble Chlorides: <10 ppm
Conductivity: < 15 mS/m

GARNET - Almandine Garnet



Description: Garnet is a naturally occurring mineral, mined and processed exclusively for Euroblast. It is non-toxic and non-hazardous to health and the environment. Garnet is chemically inert and contains no free silica.

Applications: Blastcleaning, hydrojet cutting and water filtration.

Grain Sizes

# 120	0.10- 0.25 mm	# 20- 40	0.30- 0.85 mm
#80	0.125-0.40mm	#12-40	0.30-1.25mm
#30-60	0.20-0.60mm	#12-20	0.45-1.25mm
#20-60	0.20-0.85mm	#8-12	0.85-1.40mm

Packing: Packing -25 kgs bags, on shrinkfoiled export pallets, 1 or 2 metric ton.
-Strong woven polypropylene big bags, of 1 or 2 metric ton.

Chemical Composition (Indication only)

SiO₂ : 35 % in bound form, < 1% free silica
Al₂O₃ : 23 %
Fe₂O₃ : 33 %
CaO : 1 %
MgO : 7%
MnO : 1%

Properties:

Shape. : sub-angular to angular
Colour : deep red
Hardnes : 7.0 -7.5 Mohs
Specific density : 4.1 kgs/dm³
Loose bulk density : 2.38 kgs/dm³
Chloride Content: <25 ppm
Conductivity : <25 mS/m

ALUMINIUM OXIDE - Brown / White



Description: Aluminium Oxide is an electro-fused aluminium oxide with very hard and tough grains.

Applications: Compressed air blast cleaning in shotblast rooms, cabinets etc. Excellent for recycling.

Grain Sizes

F12	1410 -2000 microns	F60	210 -297
F14	1190- 1680	F70	170- 250
F16	1000- 1410	F80	149- 210
F20	841- 1190	F90	125- 177
F24	595- 841	F100	105- 149
F30	500- 707	F120	88- 125
F36	420- 595	F150	63- 105
F46	297- 420	F180	53 88
F54	250- 354	F220	44- 74

Chemical Composition (Indication only)

Al₂O₃ : 95.50 %
 Fe₂O₃ : 2.70 %
 CaO : 0.19 %
 K₂O : 0.09 %
 MgO : 0.25%
 TiO₂ : 2.70 %
 Na₂O : 0.02%
 SiO₂ : 0.90 %

Properties:

Shape. : angular
 Colour : brown / white
 Hardnes : 9 Mohs
 Specific density : 3.96 kgs/dm³
 Loose bulk density : 1.6 - 1.8 kgs/dm³

Packing: 25 or 50 kgs bags, on shrinkfoiled export pallets.

GLASS BEADS



Description: EGlassbeads are a non-metallic mineral abrasive, made of soda glass.

Applications: Glassbeads are used for shotblast-cleaning, descaling and deburring. They are also suitable for inspection blasting (fraction and fracture detection) and for glarefree, decorative matt satin finishing. Another application is micro peening. When using glassbeads, there is no abrading or scouring action, no deformation of material and no contamination or embedment of particles. Glass beads are suitable for dry compressed air blasting as well as for wet blastcleaning.

Grain Sizes

0 -44	micron	149 -250	micron
44 -88	micron	177 -297	micron
53 -105	micron	250 -420	micron
74 -149	micron	420 -840	micron
105 -210	micron		

Packing: 25 kgs paper bags with in-liner, on shrinkfoiled export pallets of 1 metric ton.

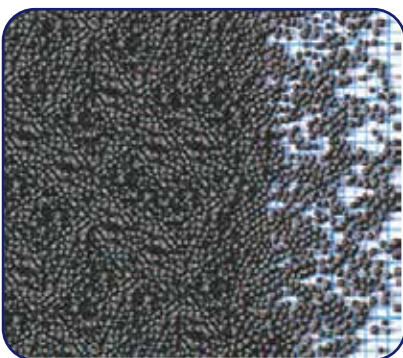
Chemical Composition (Indication only)

SiO₂ : 72.0 -73.0 %
 Al₂O₃ : 0.8 - 2 %
 Fe₂O₃ : 0.08 - 0.11 %
 CaO : 7.2 -9.2 %
 K₂O : 0.2 - 0.6 %
 MgO : 3.5 - 4%
 Na₂O : 13.3- 14.3 %
 SO₃ : 0.2 -0.3 %

Properties:

Shape. : Spherical
 Colour : Transparent, white
 Hardnes : Rockwell C 47 /Mohs 6
 Specific density : 2.5 kgs/dm³
 Loose bulk density : 1.5 kgs/dm³

STEEL SHOT



Description: Steel shot is produced by melting carefully selected scrap in ultra high power, electric furnaces. A special heat treatment process ensures an optimum microstructure and hardness.

Applications: Applications Steel shot is suitable for use in impeller-type wheel-machines as well as for compressed-air blasting in enclosed recycling systems, such as shotblast rooms, cabinets etc.

Grades

WS780	WS330
WS660	WS280
WS550	WS230
WS460	WS170
WS390	WS110

Chemical Composition (Indication only)

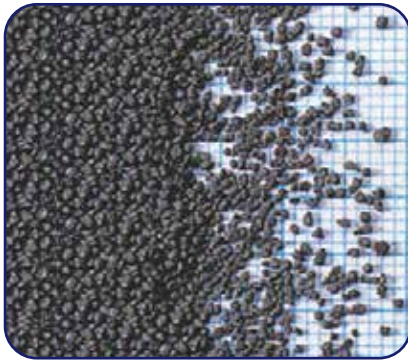
C : 0.85- 1.10 %
 Mn : 0.60 -0.80 %
 Si : 0.60 -0.80 %
 S : < 0.04 %
 P : < 0.04 %

Properties:

Shape. : spherical
 Colour : steelblue/black
 Hardnes : H -Rockwell C 40-55
 Specific density : 7.4 kgs/dm³
 Loose bulk density : 4.4 kgs/dm³

Packing: 25 kgs plastic bags, on shrinkfoiled export pallets of 1.5 ton.

STEEL GRIT



Description: Steel grit is produced by crushing steel shot, thus having the same chemical properties. A special heat treatment process ensures an optimum microstructure and hardness.

Applications: Steel grit is suitable for compressed air blasting in enclosed recycling systems, such as shotblast rooms, cabinets etc.

Grades

WG12	WG40
WG14	WG50
WG16	WG80
WG18	WG120
WG25	SABLACIER

Packing: Packing -25 kgs plastic bags, on shrinkfoiled export pallets of 1.5 ton.

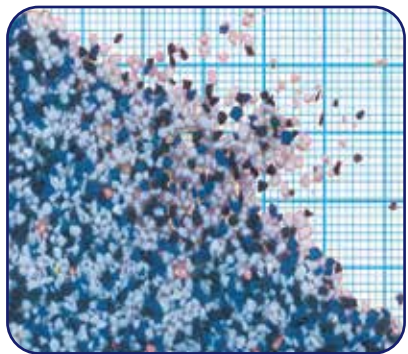
Chemical Composition (Indication only)

C : 0.85 - 1.10%
Mn: 0.60 -0.80 %
Si : 0.60 -0.80 %
S : < 0.04 %
p : < 0.04 %

Properties:

Shape. : angular
Colour : steelblue/grey
Hardness : H -Rockwell C 60-66
M -Rockwell C 52-60
N -Rockwell C 45-52
Specific density : 7.4 kgs/dm³
Loose bulk density : 4.4 kgs/dm³

PLASTIC MEDIA



Description: Plastic media is a manufactured abrasive utilised in applications requiring a controlled, gentle, no-abrading action, where damage or etching to the underlying substrate can not be tolerated.

Applications: Aircrafts (from toilet seats to aircraft wings)

Grades

Type II - Coarse Grade - Urea
Type III - Medium Grade - Melamine
Type V - Fine Grade - Acrylic

Packing: Packing -25 kgs plastic bags, on shrinkfoiled export pallets of 1 ton.

Note: To be used under controlled conditions

Chemical Composition (Indication only)

Type II: Cross linked thermo setting urea formaldehyde
Type III: Cross linked thermo setting melamine formaldehyde

Properties:

Shape. : angular
Colour : Multi coloured
Insoluble in water
Odour : Slightly fishy odour
Decomposition point : 100°C

Other Speciality Abrasives

Cereal (Natural) Abrasives

Ceramic Beads

Sodium Bi-carbonate

Cut wire

Zinc shots

Silicon carbide

Dolomite

Note: Details can be provided upon request

FILTER SAND / GRAVEL

Description: Quartz gravel is washed several times and therefore free from mire, humic substances and other contaminations. After drying, the filtersand/gravel is graded accurately.

Applications: Purification of potable water and industrial waste water, water sewage and water well drilling. Suitable for Aquarium applications.



Grain Sizes

1.0 -2.0 mm
2.0- 3.0 mm
3.0 -4.0 mm
3.0 -5.0 mm
4.0 -6.0 mm
5.0 -8.0 mm

Chemical Composition (Indication only)

SiO₂ : 97.51 %
Al₂O₃ : 1.36 %
Fe₂O₃ : 0.12 %
CaO : 0.05 %
K₂O : 0.51 %
MgO : 0.09 %
Na₂O : 0.01 %
TiO : 0.09 %
Loss on ignition < 0.237 %

Properties:

Shape. : rounded/sub-angular
Colour : white/off-white to yellow/brown
Hardnes : 7 Mohs
Specific density : 2.6 kgs/dm³
Loose bulk density : 1.6 kgs/dm³

Packing: 3-ply paper bags, 50 kgs content, on shrinkfoiled export pallets or strong woven polypropylene big bags, with 4 lifting loops.

POLLUTION CONTROL EQUIPMENT

AIR POLLUTION CONTROL EQUIPMENT

Many industrial operations and processing activities generate dust and fume. They are to be controlled to protect people, machinery and environment. Effective dust control can also reclaim valuable product.

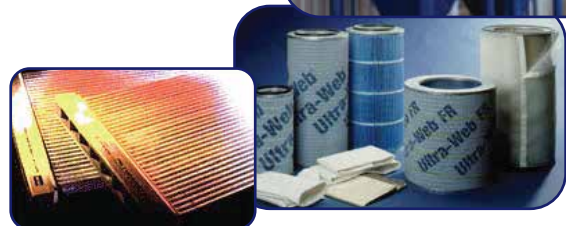
Whatever be the problem - dust, fume or oil, Euroblast provides you the solution along with Torit DCE.

Typical end-user Industries: ■Chemicals ■Powder coating, ■Foundries
■Shot blasting ■Metal spraying ■ Welding fumes ■Mineral processing
■ Pharmaceutical, and many more.

Designed for performance and ease of operation: Integrated pre-separator eliminates the need for additional pre-separators and ductwork. No-tool cartridge change and quick release dust bin makes the maintenance quick and easy.

Ultra -Web - unique cartridge media: An exclusive method of bonding a thin layer of ultra fine fibres to a structurally stable conventional filter substrate ensures that the fine submicron particles are captured.

· Filtration efficiency of 99.999% at 0.5 µm





Rev 5. 01/25



Website



EUROBLAST

P.O. Box : 31230, Dubai, United Arab Emirates | Tel: +971 4 2824400/2824200 | Fax: +971 4 2824264
E-mail: info@euroblastme.com | Website: www.euroblastme.com



Location

DUBAI:

Euroblast Middle East
Plot TP 010303, National Industries Park
Jabel Ali, Dubai - United Arab Emirates
Tel: +971 4 282 4400, +971 4 2824200
Email: info@euroblastme.com

ABU DHABI:

Euroblast Abu Dhabi
P.O. Box 47860,
Abu Dhabi - United Arab Emirates.
Tel: +971 2 554 4528
Email: abudhabi@euroblastme.com

DAMMAM:

EUROBLAST SAUDI LTD. CO
P.O. Box: 34592, Opp. Zhaid Tractors
Seaport Road, Dammam - 31478, K.S.A
Tel: +966 13 830 1066, Mob: +966 53 452 9450
Email: dammam@euroblastme.com

INDIA:

Floatels Chambers, First Floor,
TC 16/1859-2 DPI Road, Jagathy, Thycad P.O.
Thiruvananthapuram, Kerala 695014, India.
Tel: +91 471 2320 501/02
Email: india@euroblastme.com

Emergency No. :- Technical - 050 6255423 / Commercial - 050 1703135